

EOS UP

Designed by Søren Ravn Christensen



ORDERING INFORMATION

Eos Up mini white	EU/UK #2142
Eos Up medium white	EU/UK #2140
Eos Up medium light grey	EU/UK #2144
Eos Up large white	EU/UK #2141

Colour variations



white



light grey



Surface mounted lamp



DIMENSIONS

Eos Up mini (Ø × H): 30 × 14 cm / 11.8 × 5.5"
Eos Up medium (Ø × H): 40 × 15 cm / 15.7 × 5.9"
Eos Up large (Ø × H): 70 × 27 cm / 27.6 × 10.6"



MARKINGS, TESTS & CERTIFICATIONS

CE, UKCA (for indoor use), IP2X



Easily cleaned with hairdryer



Fading can be caused by sun exposure



Fire resistant



MATERIAL

Mini: Approx. 750 goose feathers, textile and steel
Medium: Approx. 1175 goose feathers, textile and steel
Large: Approx. 2475 goose feathers, textile and steel



WEIGHT

Eos Up mini: 410 g / 0.9 lb
Eos Up medium: 475 g / 1 lb
Eos Up large: 1.2 kg / 2.6 lb



WEIGHT INCL. PACKAGING

Eos Up mini: 1 kg / 2.2 lb
Eos Up medium: 1.3 kg / 2.9 lb
Eos Up large: 2.6 kg / 5.7 lb



LIGHT SOURCE

Eos Up mini:

2 × E14 - max 15W LED / light source (not included)

Eos Up medium:

2 × E27 - max 15W LED / light source (not included)

Eos Up large:

2 × E27 - max 15W LED / light source (not included)



PACKAGING DIMENSIONS (L × W × H)

Mini: 28.8 × 28.8 × 11.3 cm / 11.3 × 11.3 × 4.4"
Medium: 38.6 × 38.6 × 14.5 cm / 15.2 × 15.2 × 5.7"
Large: 68.5 × 68.5 × 15 cm / 10.6 × 10.6 × 5.9"



ASSEMBLY TIME

15 min



MEDIA KIT

Photos and press material
Download at umage.presscloud.com



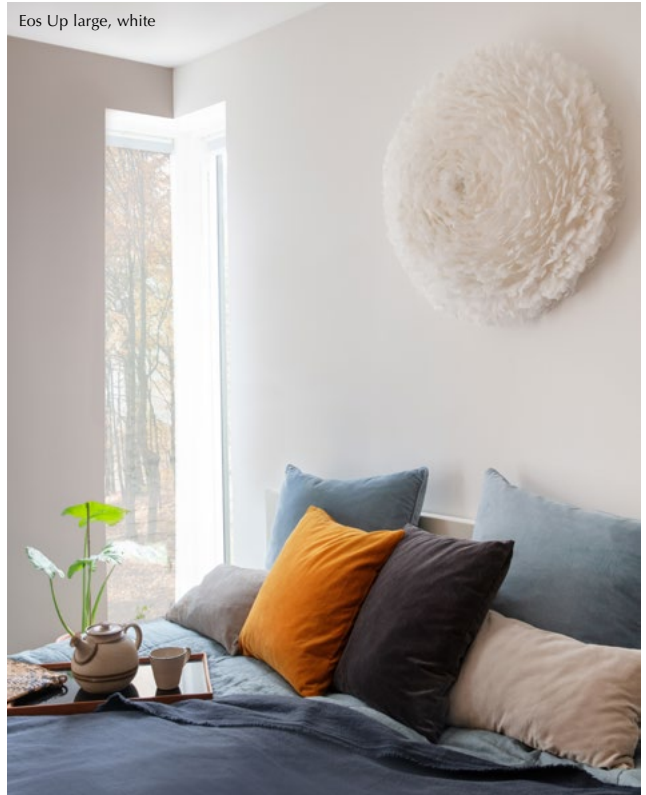
EOS UP

Designed by Søren Ravn Christensen

Eos Up medium, light grey



Eos Up large, white



ADD A STATEMENT TO THE SPACE

The Eos Up is the perfect companion for small spaces in need of big designs. Eos Up gives a soft, warm light that adds a sophisticated and elegant touch to any interior decor. Its clever construction makes it easy to mount directly onto the ceiling or wall.

Find more info on our website umage.com

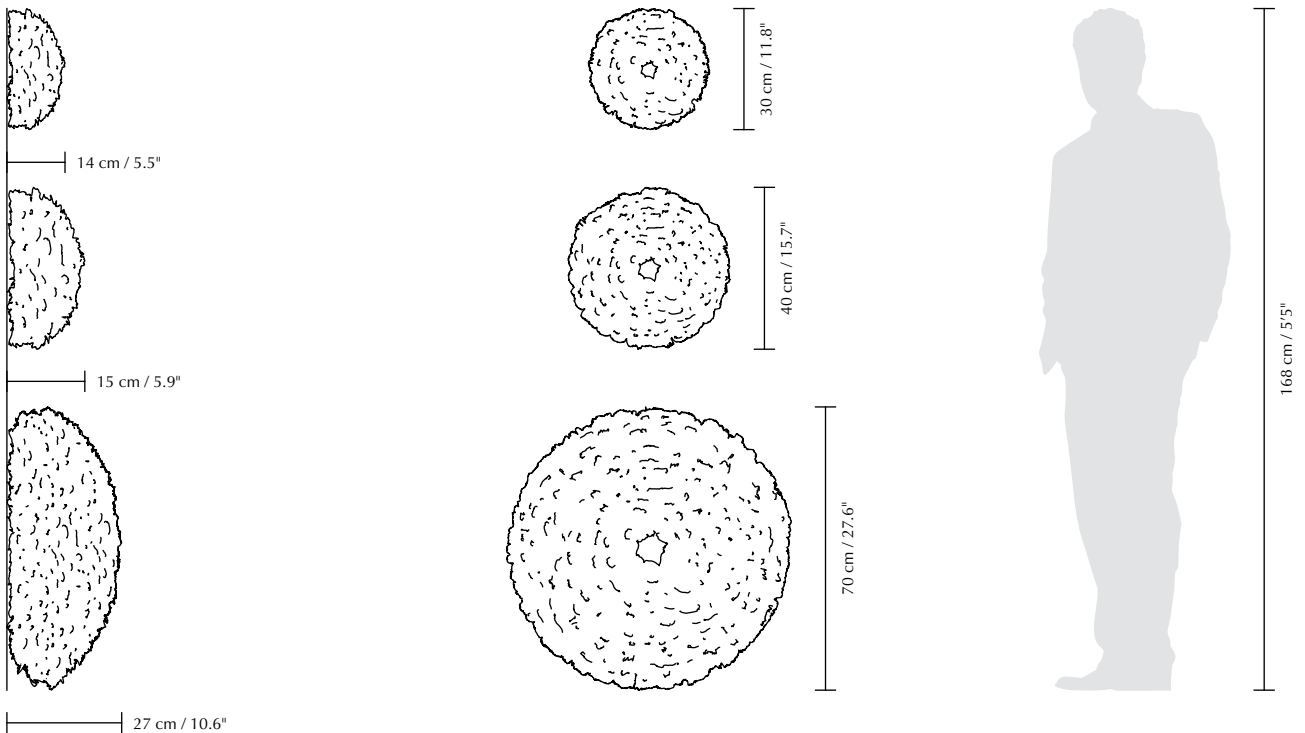
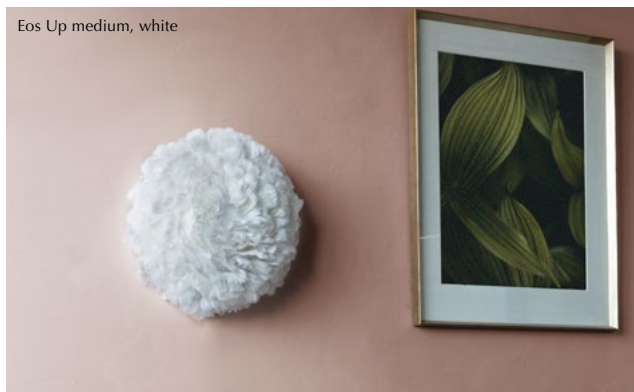
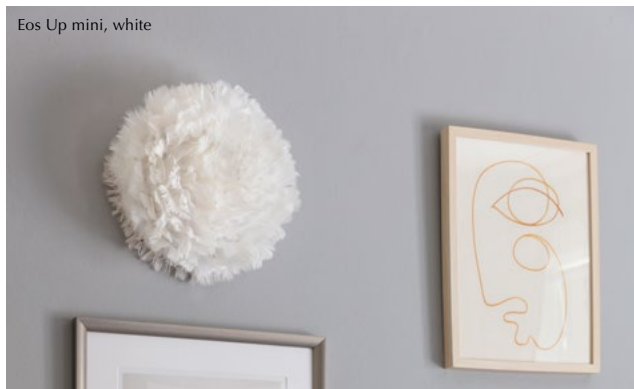
RECOMMENDED LIGHT SOURCE(S)

Good Idea	EU #4081
Fine Idea	EU #4079
Bright Idea	EU #4136



EOS UP

Designed by Søren Ravn Christensen




UIMAGE

The specifications and dimensions are subject to change without notice. Document date: 10-03-2025 | info@umage.com | umage.com
Havnegade 29, DK-1058 Copenhagen K | +45 31 39 31 31 (tel) & 185 Wythe Ave 2FL, Brooklyn, NY 11249 | +1 646-790-7171 (tel)